

KATE
BIGGS



INTERIOR DESIGN

LUPO MOOD BOARD

How it works...

- Included -mood boards for the discussed spaces. I have also added a placement page for each space so you can put it all together yourself.
- Included - shopping list with web address links of all items listed in the mood board.
- There is no obligation to buy any or all the items. This can just be used as a guide, for inspiration, or as a way to incorporate similar items you already own.
- Helpful to take mood board with you shopping and you can get similar items in store if you don't want to wait for shipping.
- Great places to look if not wanting to use amazon -Hobby Lobby and Home Goods.

LUPO - Mood Board Invoice

3/17/2023

SCOPE

- Deliver complete mood boards, price list with order information. Style directional boards included.
- Option for Kate to style items when delivered for additional \$200.00.
- Design Ideas for 1st Floor
 - Sitting Area
 - Dining Room
 - Kitchen
 - Powder Bath

HOURS

- 3/3/23 Complementary site visit walk project. 1.0 -NO CHARGE
- 3/14/23 Pull together looks at Crate and Barrel & Pottery Barn 1.5.
- 3/15/23 Online research, Create mood board 2.5.
- 3/16/23 Online research, mood board work 3.0
- 3/17/23 Complete package 1.0

TOTAL 8 hours @ \$75.00= \$600.00

Payment due on delivery

Zelle 503.869.8947

Venmo @Kate-Biggs



Sitting Area & Mantel



2

1



6



8



3



9



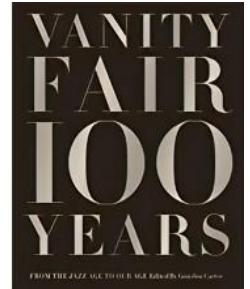
7



5



11



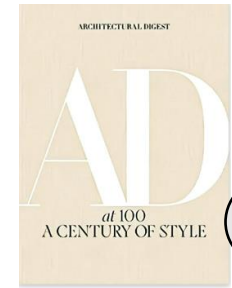
13



4



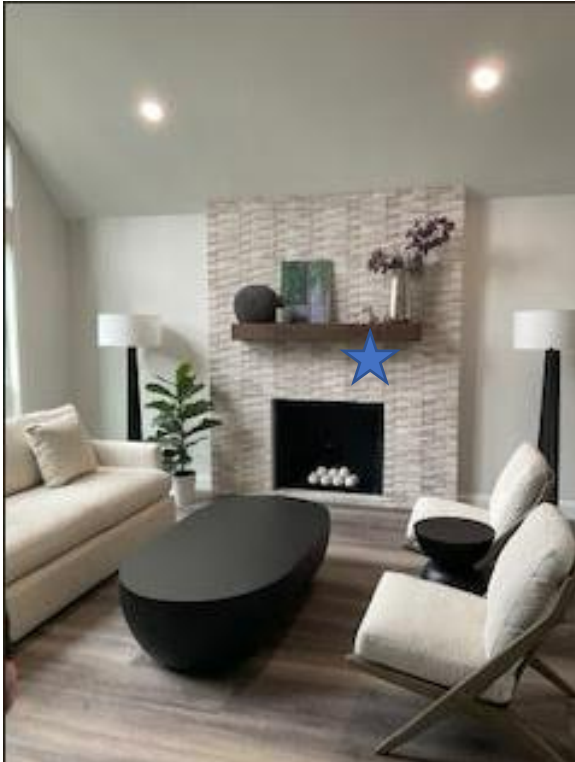
10



12



Sitting Area & Mantel



Existing black vase to the left, new plant, existing dog sculpture next to large vase, new black vase and large branches. ★

Mirror to sit behind décor on mantel do not install into tile

Sitting area - Seating



Option to swap trees - Tree to the left of fireplace

Rug centered on table under couch and chairs.

Recover existing pillows with the dark gray pillow covers

Throw on couch

1 long hair pillow on couch and one on chair.

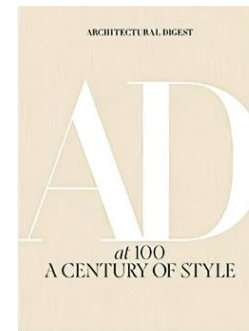
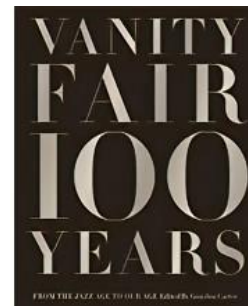


KATE
BIGGS
— —
INTERIOR DESIGN

Sitting Area Table & Fireplace



Fireplace cover to take up space. Simple design to complement the tile and fireplace insert.



Can use 1 book or 2 stack on table with knot on top



Sitting Area - Floating Shelves



22



16



15



14



22



21



17



18



19



20



26



23



24



25



KATE
BIGGS
— —
INTERIOR DESIGN

Sitting Area - Floating Shelves



Layer in existing basket to shelf 3 as marked ★

Add existing trailing plant to shelf 1 as marked ★

Books on shelf are any old books you have laying around. Take off the jacket and set them spine side to the wall different heights are great to add height..

Shelf 2 green branches are to go up and over to the top shelf. We want them large. (QTY 2)

Top shelf blossoms need to be large to take up space. (QTY 6)

***Good place for faux floral Hobby Lobby

Dining Room



27



28



29



30



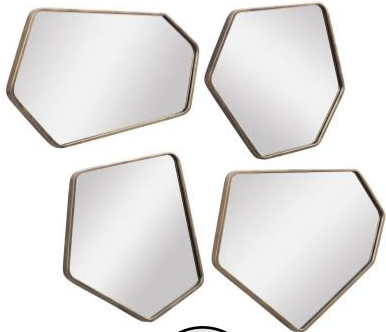
31



32



33



38



36

37



35

34

60
j



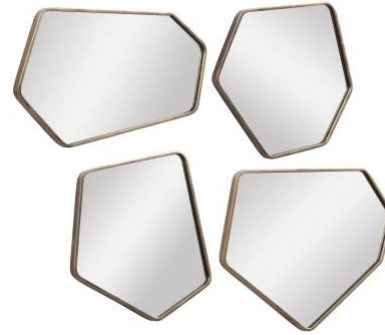
Dining Room



Two size plant stands to replace extra chair on the corner. Can use live plants or the faux plants listed

Style 3-tiered tray with votives and succulents as shown, use existing table runner

Center these over the buffet. May need to spread out a bit to get center vertically and horizontally



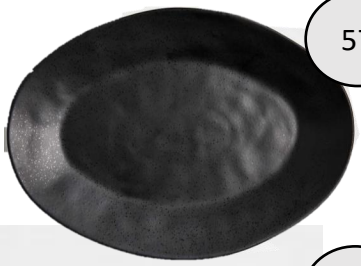
Round tray to display decanter and glasses, use existing plants to fill in center



Use existing rectangle tray and set the 3 candles on the far right of the tray



Kitchen



57



42



44



39



40



41



43



45



46



47



59



48



49



50

Kitchen



Place to the right of the sink



Place next to range, add oils and seasonings on the tray
Add existing cooking utensils for display

Kitchen

Use existing trailing plant to the left of aloe. Large plate to fill space aloe plant and serving bowl to add color



Use existing white dishes and glass. Stack tall this will create the needed height.

Stacked serving bowls to the right to add color.



Arrange cutting boards under shelf, plant to the left, glass server to the right, great for bagels donuts or even succulents

Kitchen - Coffee Bar



Arrange condiments and plants on tray, extra room to add the napkin holder and any seasonal items

Great area to add a little holiday décor.

Kitchen - Nook table



Center plant on table and enjoy

Bathroom



Arrange the planters at different heights, fill planters with rocks and inset plants. See picture above for plant placement



LUPO Shopping List

1. [Rug](#)
2. [Pillows](#) -qty 2
3. [Dark Gray Pillows](#) - qty 2
4. [Throw](#)
5. [Branch](#) -qty 2
6. [Pencil Tree](#)
7. [Small potted plant](#)
8. [Mirror](#)
9. [Fireplace Gate](#)
10. [Black wood vase](#)
11. [Knot](#)
12. [AD coffee table book](#)
13. [Vanity Fair tabletop book](#)
14. [Bull](#)
15. [Potted plant-fern](#)
16. [Potted Plant](#)
17. [Branch](#) -qty 2
18. [Small white vase](#)
19. [Medium white vase](#)
20. [Large white vase](#)
21. [Bowl](#)
22. [Bowl Filler](#)
23. [Trailing plant](#)
24. [Faux Blossom](#) -qty 6
25. [Book Ends](#)
26. Books - what you have it at home
27. [Potted Plant](#)
28. [Potted Plant](#)
29. [Large stand](#)
30. [Medium Stand](#)
31. [Tray](#) may currently have
32. [Candle holders](#)
33. [Rectangle Tray](#) may currently have
34. [Decanter](#)
35. [Glasses](#) - qty 2
36. [3-tiered tray](#)
37. [Runner](#) -existing
38. [Dining mirrors](#)
39. [Agave Plant](#)
40. [Brown serving Bowl](#)
41. [Black Serving bowl](#) qty 2
42. [Covered server](#)
43. [Faux pencil -small](#)
44. [Large Floral](#)
45. [Cutting board](#)
46. [Cutting board](#)
47. [Cutting board](#)
48. [Cutting board](#)
49. [Square cutting board](#)
50. [utensil holder](#)
51. [Tray](#)
52. [Tiered stand](#)
53. [Small plants set of 2](#)
54. [Coffee condiment set](#)
55. [Planters set of 2](#) - qty 2 sets
56. [Planter filler green](#) qty 2
57. [Filler rocks](#)
58. [Plate](#)
58. [Dried branch](#)
59. [Aloe](#)
60. [Glass tall](#) -qty 2